



CAP NEWS

Vol. 1 – 12/01/2022

NEW WAREHOUSE PICS





CAP NEWS

Vol. 1 – 12/01/2022

NEW WAREHOUSE PICS





CAP NEWS

Vol. 1 – 12/01/2022

UPCOMING DATES



December 25th Christmas Holiday

December 31st New years Eve



December Coastal Anniversaries

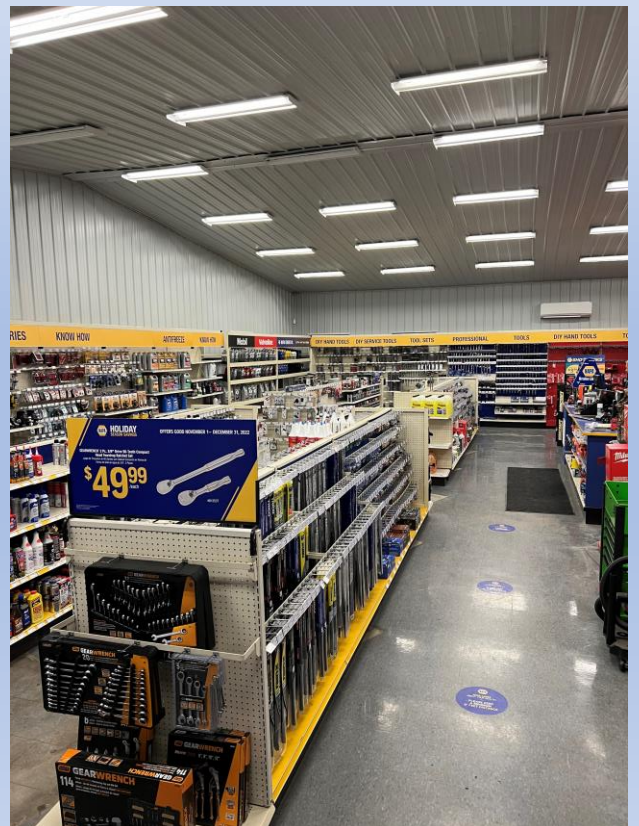
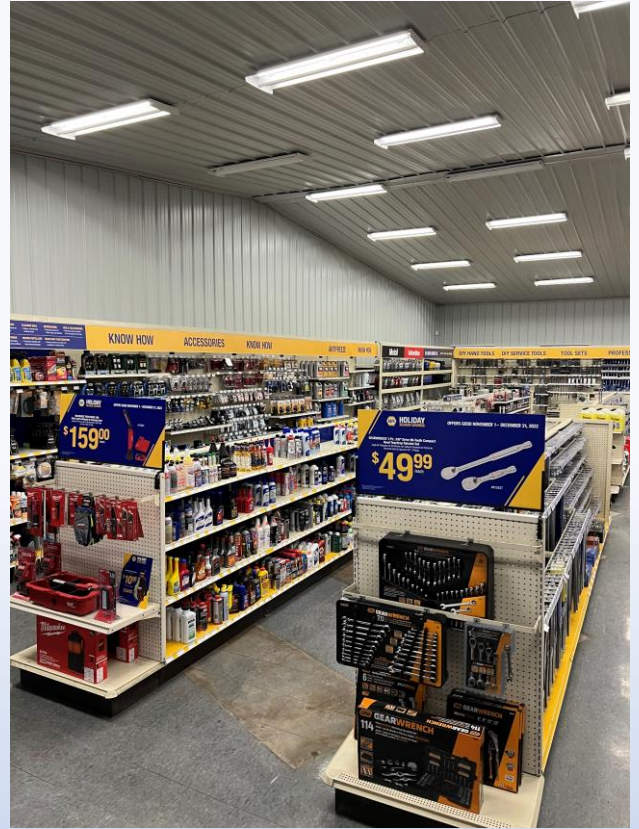
Fay	B	December	Admin	41 years
Suzanne	T	December	Admin	21 years
Vicki	M-G	December	Auburn	5 years
Guy	D	December	Auburn	5 years
Marshall	R	December	Bangor	2 years
Randy	C	December	Belfast	8 years
Tammy	B	December	Blue Hill	4 years
Grace	C	December	East Millinocket	1 year
Frederick	S	December	Farmingdale	2 years
Norman	C	December	Farmingdale	5 years
David	C	December	Farmingdale	5 years
Mark	C	December	Houlton	12 years
Charles	Ha	December	Lewiston	5 years
Chad	T	December	Lewiston	5 years
Douglas	B	December	Lisbon	23 years
Marcus	D	December	Machias	2 years
Blaise	P	December	Milbridge	1 year
Harold	A	December	Rockland	1 year
Tyler	T	December	SW Harbor	5 years
Christopher	M	December	Waterville	6 years



CAP NEWS

Vol. 1 – 12/01/2022

SOUTHWEST HARBOR RESET





CAP NEWS

Vol. 1 – 12/01/2022

NEW @ COASTAL AUTO PARTS ASHLAND



Introducing the Topaz signature capture tablet.

Enables “At the counter charge account customers to sign their invoice by signing on the tablet.”

“Signature is printed on the invoice.”

“Reprints of the invoice will also reprint the signature.”



CAP NEWS

Vol. 1 – 12/01/2022

HAPPY BIRTHDAY

Christopher	B	Admin	12/1	December
Jeffrey	D	Admin	12/6	December
Bruce	M	Admin	12/15	December
Dana	H	Ashland	12/6	December
Corey	R	Auburn	12/14	December
Dakota	M	Bethel	12/3	December
Luke	M	Bucksport	12/18	December
Norman	B	Caribou	12/3	December
Lynn	J	East Millinocket	12/28	December
Paul	J	East Wilto	12/25	December
Matthew	L	Ellsworth	12/18	December
Ryan	K	Ellsworth	12/22	December
Damon	B	Ellsworth	12/27	December
Glenn	S	Gray Napa	12/11	December
Ian	L	Gray Napa	12/29	December
Robert	H	Mexico	12/29	December
James	T	Mexico	12/21	December
Robert	R	Rockland	12/22	December
Norman	D	Skowhegan	12/10	December
Randy	L	Skowhegan	12/14	December
Cole	M	Topsham	12/29	December
Kerry	B	Topsham	12/14	December
Eric	L	Waterville	12/23	December



CAP NEWS

Vol. 1 – 12/01/2022

Get Ready for the holiday season!!

Check out this Great Deal at our Presque Isle Store!



Awesome Gear wrench toolbox loaded come check it out at NAPA in PI -----> Limited Quantity Left!

\$3300.00

Call Bill @ our Presque Isle store for more details.

207-764-5553



CAP NEWS

Vol. 1 – 12/01/2022

Get Ready for the holiday season!!

HOLIDAY SEASON SAVINGS

MOBILE ACCESSORIES ACCESORIOS PARA EL MÓVIL

<p>\$14⁹⁹ /each IHome® o' Lighting Cable Cable de luz IHome® de 6' #HCT1038800</p> <p>SAVE 25%</p> 	<p>\$23⁹⁹ /each IHome® o' Lighting Cable w/Wall Charger Cable de luz IHome® de 6' con cargador de pared #HCT1156W00</p> <p>SAVE 25%</p> 	<p>\$10⁹⁹ /each Bytech® 3.5' USB Type-C Cable Cable USB Tipo-C Bytech® de 3,5' #CLCPCA102BK</p> <p>SAVE 27%</p> 	
<p>\$18⁹⁹ /each IHome® DC Pro Car Charger & USB-A To Type-C Bundle Cargador de automóvil IHome® DC Pro y paquete de USB-A a Tipo-C #HCT3250B</p> <p>SAVE 24%</p> 	<p>\$9⁴⁹ /each Bytech® 3 AMP Dual USB Cigarette Lighter Charger Cargador de encendedor Bytech® 3 AMP Dual USB #CLCPV3100BK</p> <p>SAVE 24%</p> 	<p>\$8²⁹ /each Bytech® 4.1 AMP 3 USB Port Cigarette Lighter Charger Cargador de encendedor Bytech® de 4,1 AMP y 3 puertos USB #CLCPV4004RD</p> <p>SAVE 25%</p> 	
<p>\$32⁹⁹ /each IHome® PopUp Sticks Wireless Ear Buds Auriculares inalámbricos IHome® PopUp Sticks #HMAUE202BK</p> <p>SAVE 25%</p> 	<p>\$32⁹⁹ /each IHome® True Wireless Ear Buds Auriculares inalámbricos IHome® True Wireless #HMAUE204BK</p> <p>SAVE 25%</p> 	<p>\$29⁹⁹ /each IHome® Wireless Charging Pad Almohadilla de carga inalámbrica IHome® #H011000B</p> <p>SAVE 25%</p> 	<p>\$8²⁹ /each Bytech® Smartphone Universal Car Mount Soporte universal para teléfonos inteligentes Bytech® #CLCMBLK</p> <p>SAVE 25%</p> 

GARAGE ORGANIZATION ORGANIZACIÓN DEL GARAJE

<p>\$10⁹⁹ /each Velcro® Easy Hang® Cinch Strap Cinta de sujeción Velcro® Easy Hang® #VEL30800USA</p> <p>SAVE 19%</p> 	<p>\$3⁹⁹ /each Velcro® Elastic Cinch Small Straps Cinta de sujeción elástica pequeña Velcro® #VEL30842USA</p> <p>SAVE 11%</p> 	<p>\$4⁹⁹ /each Velcro® Elastic Cinch Medium Straps Cinta de sujeción elástica mediana Velcro® #VEL30841USA</p> <p>SAVE 17%</p> 	<p>\$7⁹⁹ /each Velcro® Elastic Cinch Large Straps Cinta de sujeción elástica grande Velcro® #VEL30840USA</p> <p>SAVE 20%</p> 
---	--	--	---

SNOW BRUSHES & ICE SCRAPERS CEPILLOS DE NIEVE Y RASCADORES DE HIELO

<p>\$1⁹⁹ /each Hopkins® 10" Curved Blade Ice Scraper Rascador de hielo Hopkins® de 10" con hoja curva #7304046</p> <p>SAVE 33%</p> 	<p>\$11⁴⁹ /each Hopkins® 35" Snow Brush & Scraper Cepillo y rascador de nieve Hopkins® de 35" #8155084</p> <p>SAVE 25%</p> 	<p>\$12⁹⁹ /each Hopkins® 48" Snow Broom & Ice Scraper Barridora de nieve y rascador de hielo Hopkins® de 48" #8155085</p> <p>SAVE 25%</p> 	<p>\$4²⁹ /each Hopkins® 21" Snow Brush & Ice Ripper Cepillo para la nieve y rampallitos Hopkins® de 21" #8101056</p> <p>SAVE 28%</p> 
---	---	--	---

6

Shop NAPAonline.com



CURBSIDE PICKUP
IN 30 MINUTES



FREE ONE-DAY SHIPPING
ON 100,000 PARTS



CAP NEWS LOCAL EVENTS

Vol. 1 – 12/01/2022



Anah Facts & Figures, 1525 Waltham Rd, Waltham, Maine 04605

anahfactsandfigures@gmail.com

Downeast Festival of Trees, 2022

How it works

The object of this Festival of Trees is to have organizations and businesses donate fully decorated artificial trees that will be displayed throughout the event. The public is invited to come and see this extravaganza of trees, as well as some special displays benefiting the Christmas theme. A sign designating the name of your Business or Organization will be prominently displayed with your tree throughout the event.

Admission to the showing of the trees is \$1.00 for adults, children under 12 and Veterans are free. Raffle tickets will be available for sale so that the viewers may enter their tickets in the hopes of winning a beautiful tree. Each tree's winner gets to take it home, fully decorated and already for the holidays with everything that is on it or under it. There will be refreshments and food available, for purchase, every day during the festival.



CAP NEWS LOCAL EVENTS

Vol. 1 – 12/01/2022



Dates of the Festival:

Dec. 8th 5PM to 8PM, 9th 12PM to 8PM, 10th 9AM to 8PM, 11th 9AM to 4PM at the Franklin Veterans Club, 4 Cards Crossing, Franklin.

Guidelines

All trees must be **artificial** trees. Trees may be any size, but smaller trees may have to be elevated to be enjoyed and may require additional setups. We reserve the right to display small or miniature trees where we can fit them in. We suggest floor trees five feet and up. The taller ones are the most impressive.

Each tree will have an approximate 6 foot by 6-foot area for setup and display of gifts. Trees must be properly secured for free standing. A good solid stand will provide the best stability. A skirting or a stand cover with cotton batting is recommended. Items placed at the bottom, or on the skirting, will be considered part of the tree and will be given away, unless otherwise noted. **A list of all gifts that go with the tree is required.** The tree must have **LED lighting**. No Alcohol is to be displayed or included as prizes with the tree.

Anah Facts & Figures is not responsible for loss of prizes, displays or trees:

A new power cord that meets the standard electrical code must be used. Tree sponsors must supply all set up accessories (wire, tape, decoration hangers, wire ties, etc.)



CAP NEWS LOCAL EVENTS

Vol. 1 – 12/01/2022



You need to select a theme of your choice to be displayed under your Company or Group name on your sign.

The theme may represent your business, are of interest (hobbies, etc.), the holidays, or any other theme that you would be proud to have your business or group associated with in the public eye. The winner of your tree will be drawn from your raffle container at the end of the festival.

Please do not

Attach money to the tree, you can use a card, play money or paper printed to look like money, we suggest putting the real money in an envelope marked with the tree name and number that will be placed in Anah Facts & Figures safe and given to the tree winner, when they pick up the tree. (The same can apply to gift cards)

Set up Dates

Tree setup dates by the sponsors to be determined. Please contact Anah Facts & Figures for any questions you may have.

Email: anahfactsandfigures@gmail.org



CAP NEWS LOCAL EVENTS

Vol. 1 – 12/01/2022

Northern Lights Share the Wonder

November 18 to December 31, 2022
Freeport, Maine

Auburn Christmas Parade

Sunday, December 4,
2022:00pm – 3:00pm

Light Up the Night

Kick off your Christmas season with our annual family event! This year we will host a live nativity as you walk the “Journey to Bethlehem.” You can arrive at 5:00, 5:30, 6:00 or 6:30 and join a tour guide on the Journey to Bethlehem.

Sat, Dec 3, 5 – 7 PM

The Rock Church of Bangor
1195 Ohio St, Bangor, ME

This is an outdoor event.

42ND ANNUAL DOWNTOWN ELLSWORTH CHRISTMAS PARADE

This year's theme is ***Christmas at the Movies***. The parade is scheduled for Saturday, December 3rd and will kick-off at 4:00pm.

Sunday, December 4th is the inclement weather date if needed

Line-up for the parade will begin at Knowlton Park off from State Street, travel down State Street to School Street, across School Street, Turning onto Main Street, traveling to the lower light and then back up State Street to Knowlton Park.



CAP NEWS - DIY

Vol. 1 – 12/01/2022

Winter Prep 2022 Guide; Be Ready

Check your car fluid levels

One of the first things to do is make sure your vehicle's [windshield washer fluid](#) is seasonally appropriate. This will make life a lot easier, especially when the temperature drops below zero.

Don't forget to check your other essential car fluids as well. Learn all about the importance of [brake fluid](#), [coolant](#), [power steering fluid](#), and more [in our article](#). You should also inspect your oil level. While you're under the hood, ask yourself whether your vehicle is due for maintenance.

Jumper cables

What could be more frustrating than being stuck at work because of a dead battery? If a driver is nearby and willing to help, jumper cables are all you need to get back on the road. To learn more, read our article on [how to safely use jumper cables](#).

Think about the essentials

Take a moment to stash a [pair of gloves](#), a [warm hat](#), and a neck warmer in the glove compartment. We suggest that you replace your usual windshield washer fluid with one that is [made for winter](#) and keep a spare jug in the trunk. Above all, don't forget to leave a scraper and small shovel in your car. Snow sometimes accumulates quickly, and it's easy to get stuck in a poorly plowed parking lot.



CAP NEWS *Save the date.*

Vol. 1 – 12/01/2022



TECHCONNECT

All You Need to **KNOW** or **DO** About Technology

**In One Place
Once A Month
Under One Hour**

Join the GPC Technology leadership team each month for updates from technology leaders on what you need to Know or Do about technology in the coming months.

WE HEARD YOU!

We are improving the effectiveness and efficiency of technology communications so you can sell more parts.



CAP NEWS

Vol. 1 – 12/01/2022

4 Letter Words

BELL
SNOW

5 Letter Words

ANGEL
COCOA
ELVES
HOLLY

6 Letter Words

LIGHTS
SLEIGH
TINSEL
WINTER
WREATH

7 Letter Words

CHIMNEY
GARLAND
PAGEANT
RUDOLPH
SNOWMAN

8 Letter Words

CAROLING
DECEMBER
EXCHANGE
ORNAMENT
PRESENTS
REINDEER
WRAPPING

9 Letter Words

CHESTNUTS
CHRISTMAS
EVERGREEN
FRUITCAKE
MISTLETOE
NORTH POLE

10 Letter Words

POINSETTIA
SANTA CLAUS

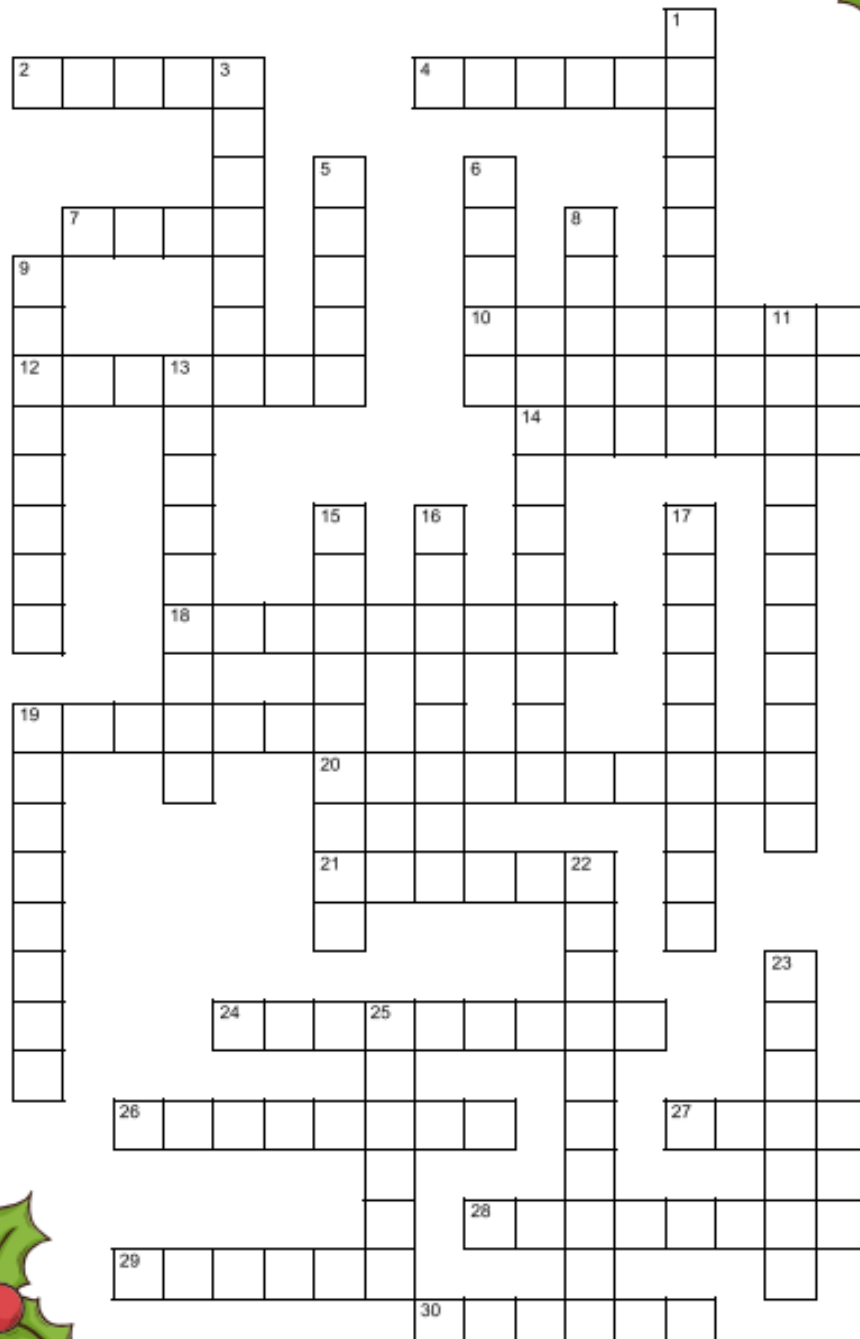
11 Letter Word

GINGERBREAD

Christmas Joy



DIRECTIONS: Fill in the crossword grid with the provided words.





CAP NEWS

Vol. 1 – 12/01/2022



Thanks for subscribing!! See you in January - 2023